

Belgium FDM Activation Guide

This guide explains how to activate and configure the Belgian Fiscal Data Module (FDM) in the POS system. The FDM integration is used for staff time registration and fiscal POS operations.

1. Configure Staff Social Security Numbers

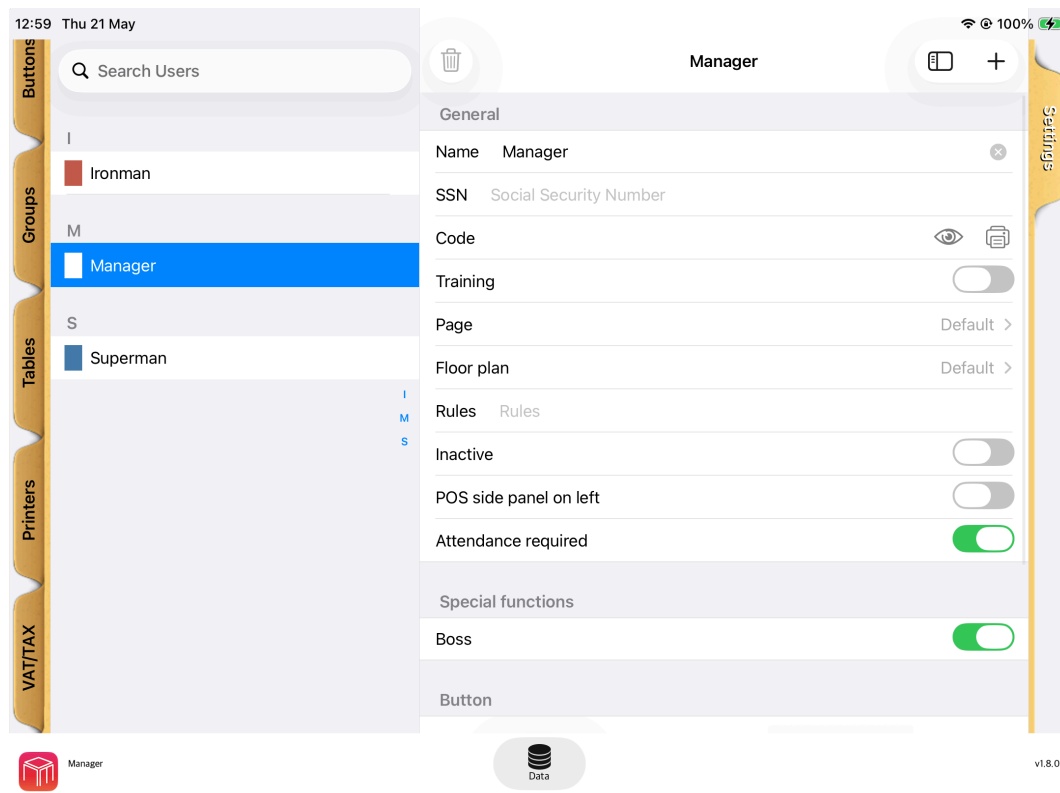
Each POS operator must have their Belgian Social Security Number (SSN) configured.

Steps:

- Open the POS menu.
- Navigate to: Menu → Data → Users
- Select each user that will operate the POS.
- Fill in the SSN field with the employee's official Belgian Social Security Number.

Important: The SSN must contain 11 digits and correspond to the official number of the employee. This value is required for Work-In and Work-Out fiscal events.

Screenshot placeholder:



2. Configure Payment Methods

Each payment method used in the POS must be correctly mapped for fiscal reporting.

Steps:

- Open the POS menu.
- Navigate to: Menu → Data → Payments
- For each payment method configured in the system, select the appropriate Payment Type and Amount Type.

Typical configuration examples:

| Payment Method | Payment Type | Amount Type |
|----------------|--------------|-------------|
| Cash | CASH | PAYMENT |
| Card | CARD | PAYMENT |
| Tip in cash | CASH | TIP |
| Voucher | VOUCHER | PAYMENT |

Important: Every payment method used in the POS must have these fields correctly configured.

Screenshot placeholder:

The screenshot shows the configuration interface for payment methods in a POS system. On the left, a sidebar menu includes options like Print, VAT/TAX, Users, Payments, and Courses. The main area displays a list of payment methods: Card (1,00) and Cash (1,00). The 'Cash' method is selected and its configuration is shown on the right. The configuration includes fields for Surcharge (0,00), Percentage (0,00), Discount (toggle off), Not divisible (toggle off), Quick pay (toggle off), Default 1 (toggle off), Service (toggle off), Open drawer (toggle on), Open drawer 2 (toggle off), Copies (0), Inactive (toggle off), Cash (toggle on), Payment type (Cash >), and Amount type (Payment >). The bottom of the screen shows the 'PAYMENT PROVIDER' field and the system version 'v1.7.69'.

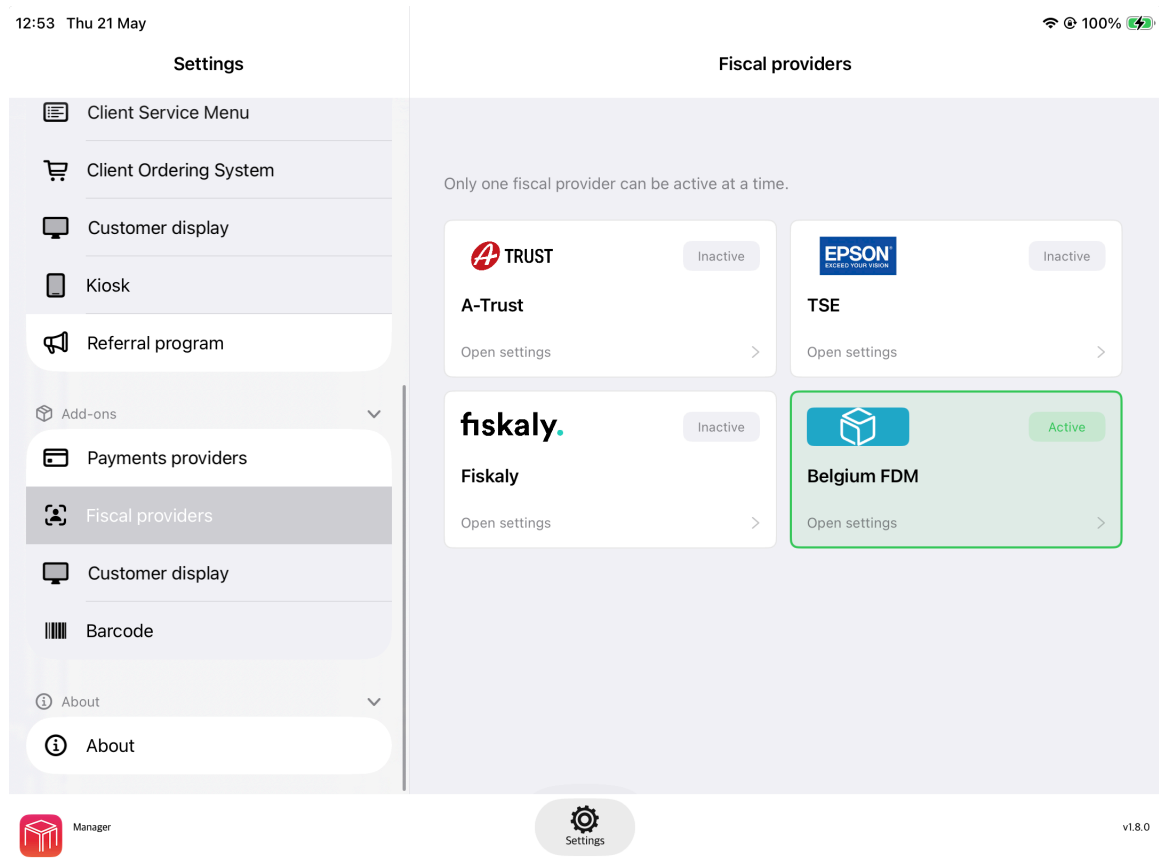
3. Configure Belgium FDM Settings

The FDM connection parameters must be configured in the POS.

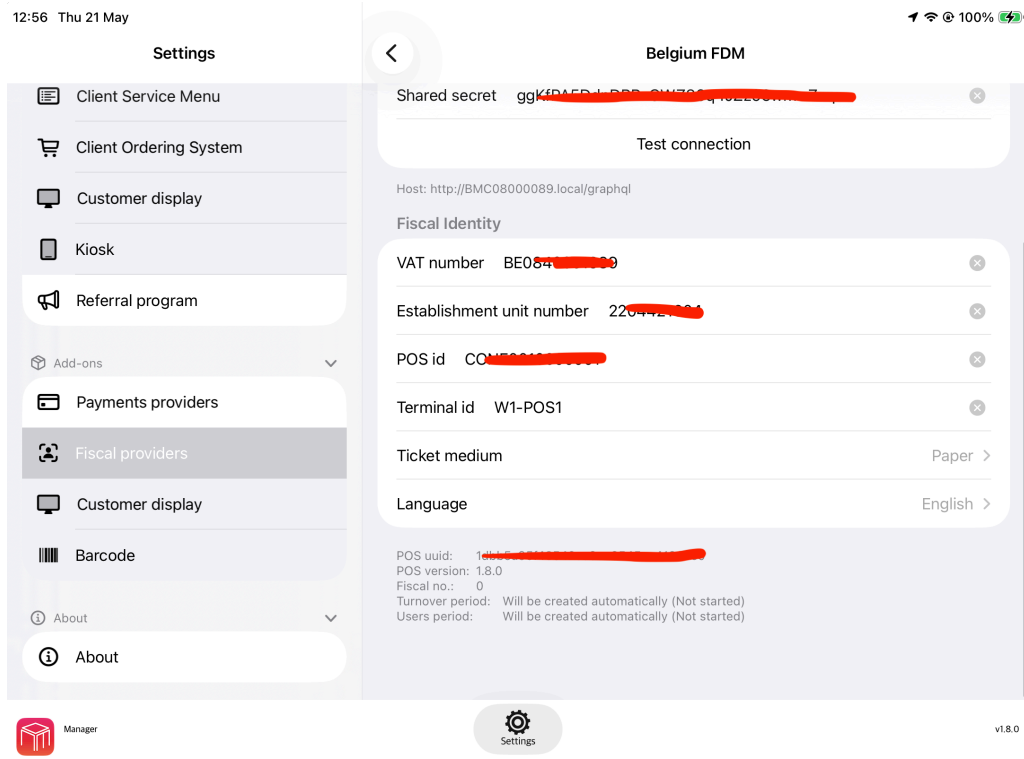
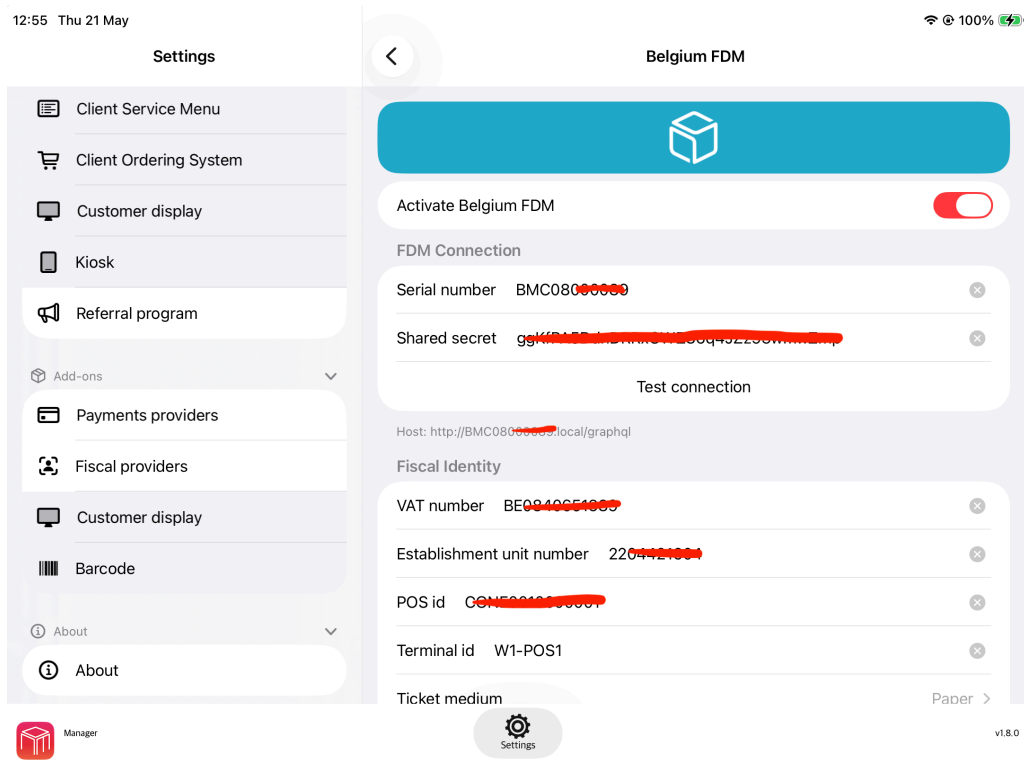
Steps:

- Open the POS menu.
- Navigate to: Menu → Settings → Add-ons → Fiscal providers → Belgium FDM

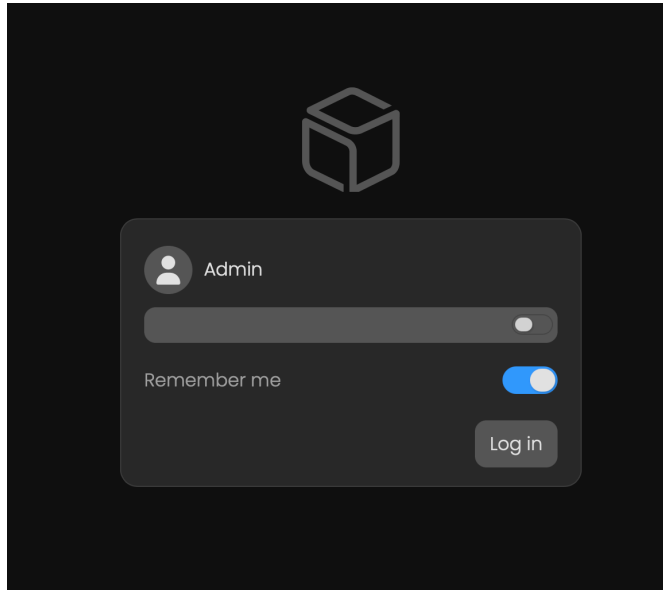
Screenshot placeholder:



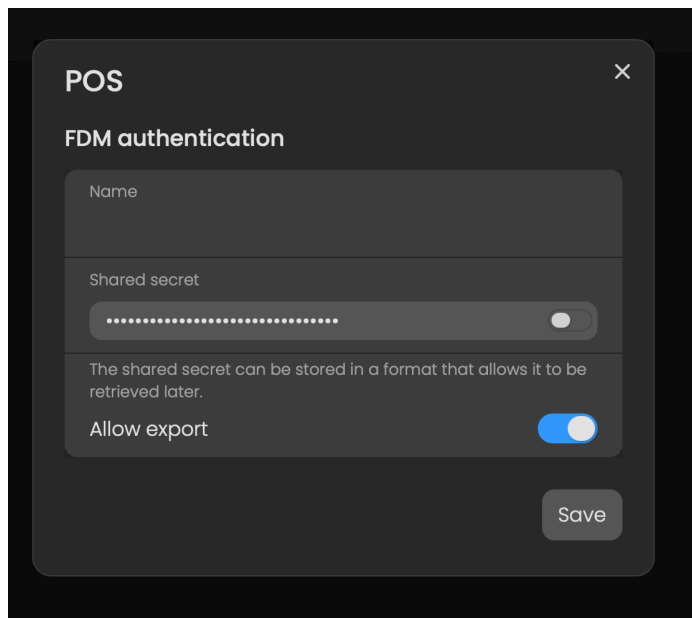
- Fill in all required configuration fields:



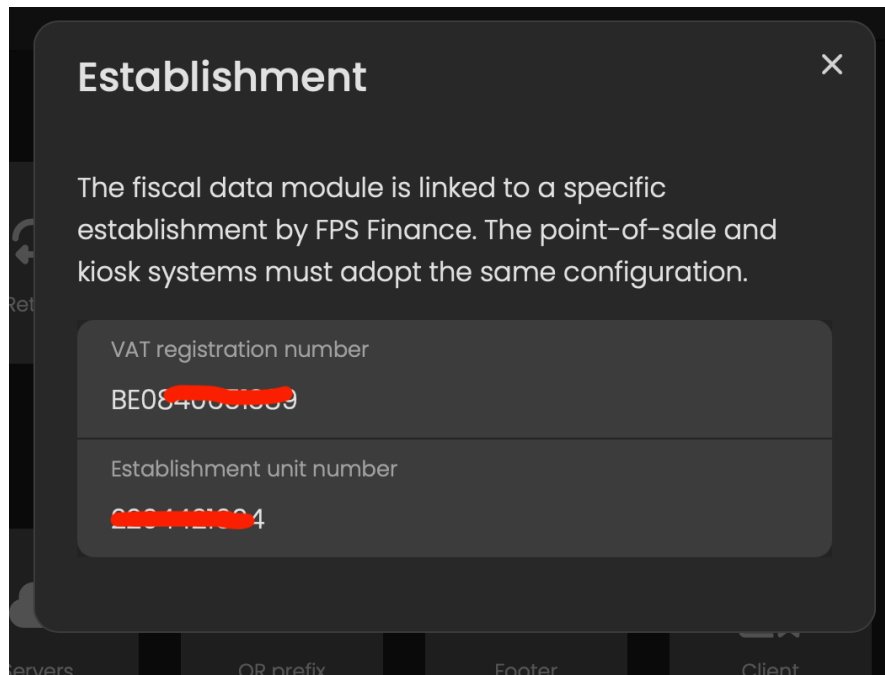
Get the additional information from the FDM console (the serial number of your FDM and add .local to it e.g. <http://bmc08000089.local>). There is normally no login password.



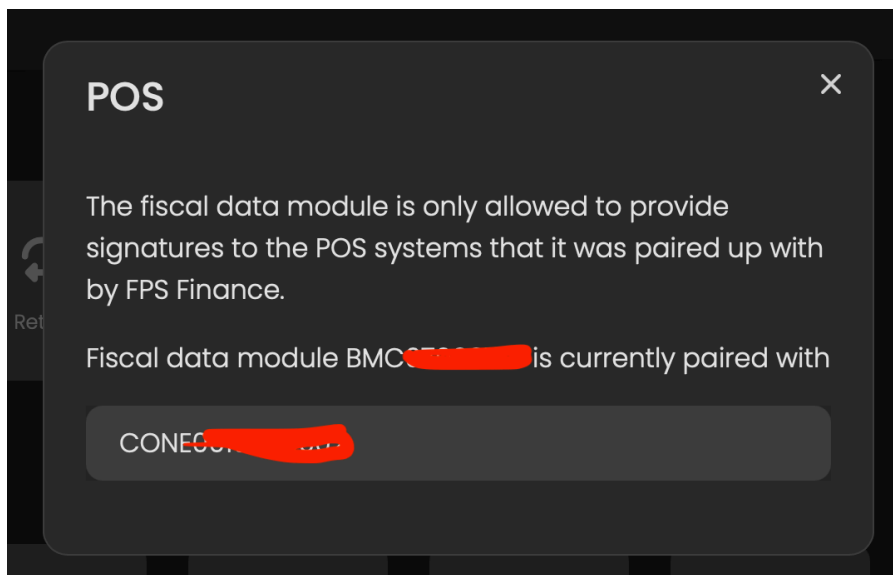
- **Serial number:** the serial number can be found on the back of the FDM.
- **Shared secret:** go to Users → POS → FDM authentication. Send or copy it and paste it.



- **VAT Number and Establishment unit number:** Enter VAT number and Establishment unit number. Can also be found on your FDM, FPS Finance → Establishment



- **POS id:** Can be found in the FDM, FPS Finance -> POS



- **Terminal id:** Use a unique name to identify your device (e.g. W1-POS1)
- **Ticket medium:** select paper for now

4. System Behaviour After Activation

Once all parameters are configured, the POS will automatically send fiscal events to the FDM system.

- Staff Time Registration:
 - Work-In events when a user starts working.
 - Work-Out events when a user finishes working.
- Fiscal POS Events:
 - Orders, Bills, Payments

5. Important Notes

- Each operator must have a valid SSN configured.
- Each payment method must have a valid fiscal mapping.
- The Belgium FDM settings must be fully configured.
- Please perform a Z Users and Z Financial after every shift.

6. Troubleshooting

- Verify that all users have a valid SSN configured.
- Check that all payment methods have Payment Type and Amount Type defined.
- Ensure the Belgium FDM configuration fields are correctly filled.
- Confirm that the POS has an active internet connection.

7. Support

If you experience issues during activation, please contact your POS provider or technical support. When requesting support, provide the POS identifier, terminal identifier, and screenshots of the configuration.

WaiterOne SL
INCL. BTW

Manager 1
21/05/2026, 15:06:27 #55021/193299

1 Coca cola 2,50 C
1 Coca cola zero 2,50 C

Subtotal: 5,00€

| Rate # | Subtotal | VAT/TAX | Total |
|----------|----------|---------|-------|
| 21,00% C | 4,13 | 0,87 | 5,00 |

| | # | Value | Total |
|---------|------|-------|-------|
| Contant | 5,00 | 1,00 | 5,00 |
| Contant | 0,00 | 1,00 | 0,00 |

Total: 5,00€

FDM SALE OK
FDM ID: BMC08000089
Fiscal time: 2026-05-21T13:06:34.416Z
Counter: 4 / 37

Digital signature:
/H8c2jcv5hADDsvQNGwqycOXmQu6TUXOCU4dSYieG+Ao8BeEos5ra1krE
60smN7/J/6uEKEuvr3VPZrDQ1cLw==
Verify: <https://www.gs2.be/1n1ZcqVR1dj8b1Ny3fG>



Thank you for using GKS2

www.waiterone.net